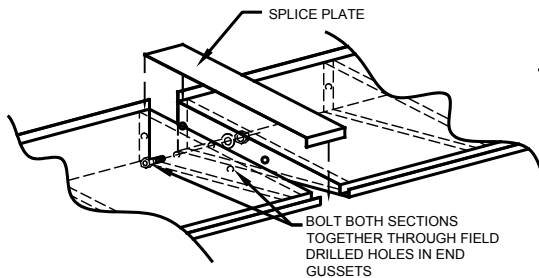
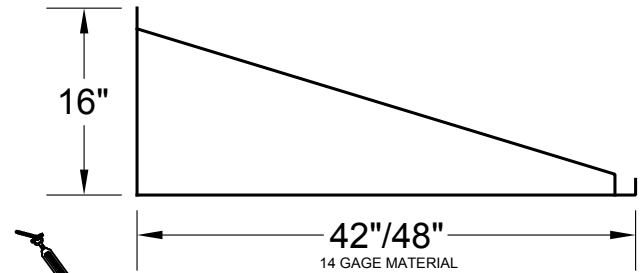
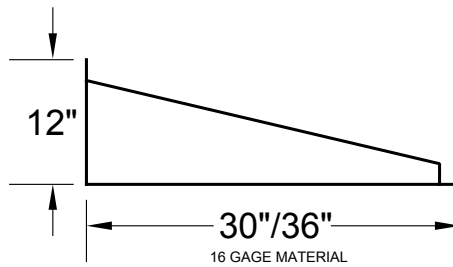
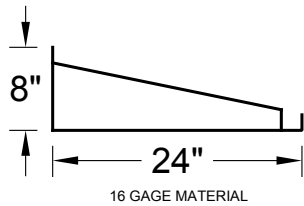
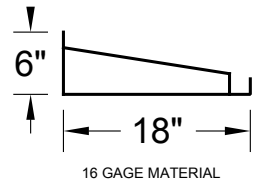
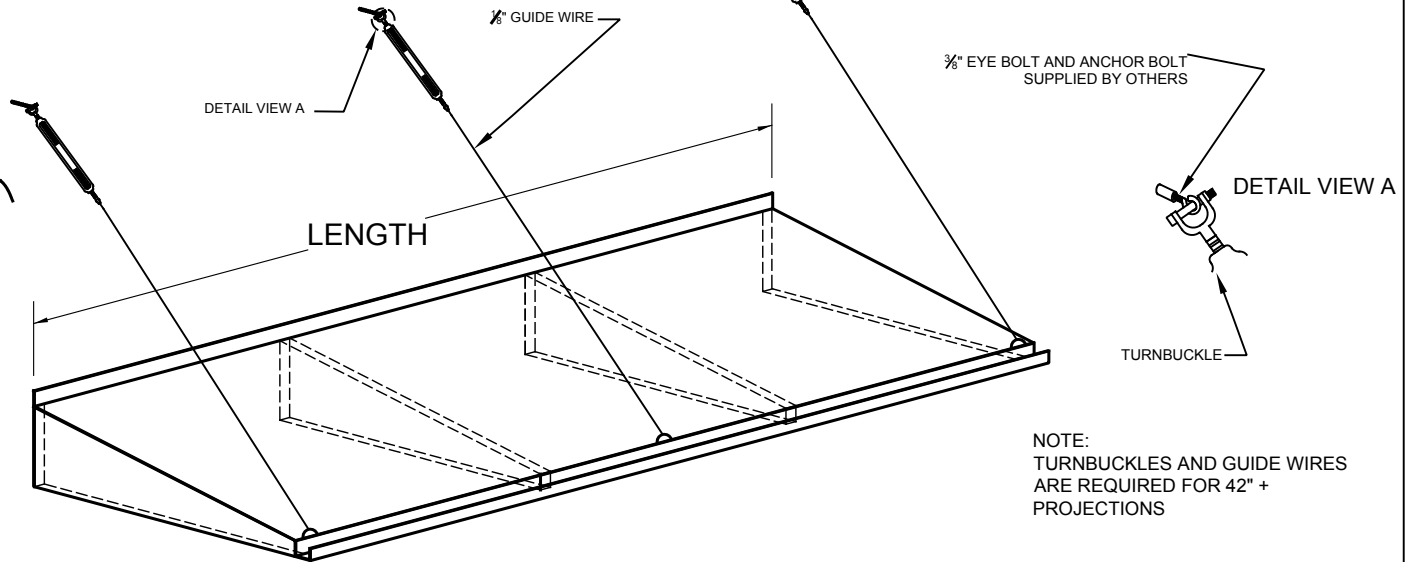


METAL HOOD SPECIFICATION SHEET:



NOTE:
HOODS OVER 12' IN LENGTH
HAVE TO BE CONNECTED
TOGETHER WITH AN OVERLAP
SPLICE PLATE

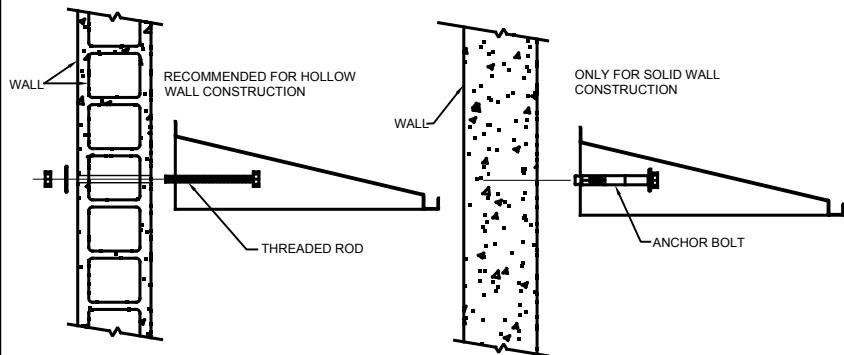


NOTE:
TURNBUCKLES AND GUIDE WIRES
ARE REQUIRED FOR 42\"/>

MOUNTING OPTIONS

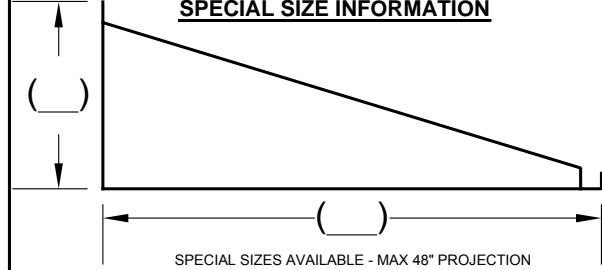
BOLT THROUGH THE WALL

ANCHOR TO THE WALL



- QUANTITY: _____
SIZE:
- " L x 18" PROJ. x 6" H 16 ga.
 - " L x 24" PROJ. x 8" H 16 ga.
 - " L x 30" PROJ. x 12" H 16 ga.
 - " L x 36" PROJ. x 12" H 16 ga.
 - " L x 42" PROJ. x 16" H 14 ga.
 - " L x 48" PROJ. x 16" H 14 ga.

SPECIAL SIZE INFORMATION



GUSSET PER LENGTH		TABS PER LENGTH	
2	1'-5'	2	1'-5'
3	6'-7'	3	6'-9'
4	8'-10'	4	10'-12'
5	10'-12'		

P PERMA TECH, INC.
363 HAMBURG STREET • BUFFALO, NY 14204
(716) 854-0707 • 1-800-DOC-SEAL

JOB: _____
DEALER: _____
CONTRACTOR: _____ QUOTE: _____
APPROVED BY SIGNATURE: _____ DRAWN BY: C.BAYERL DATE: 11/06/2020

NOTES